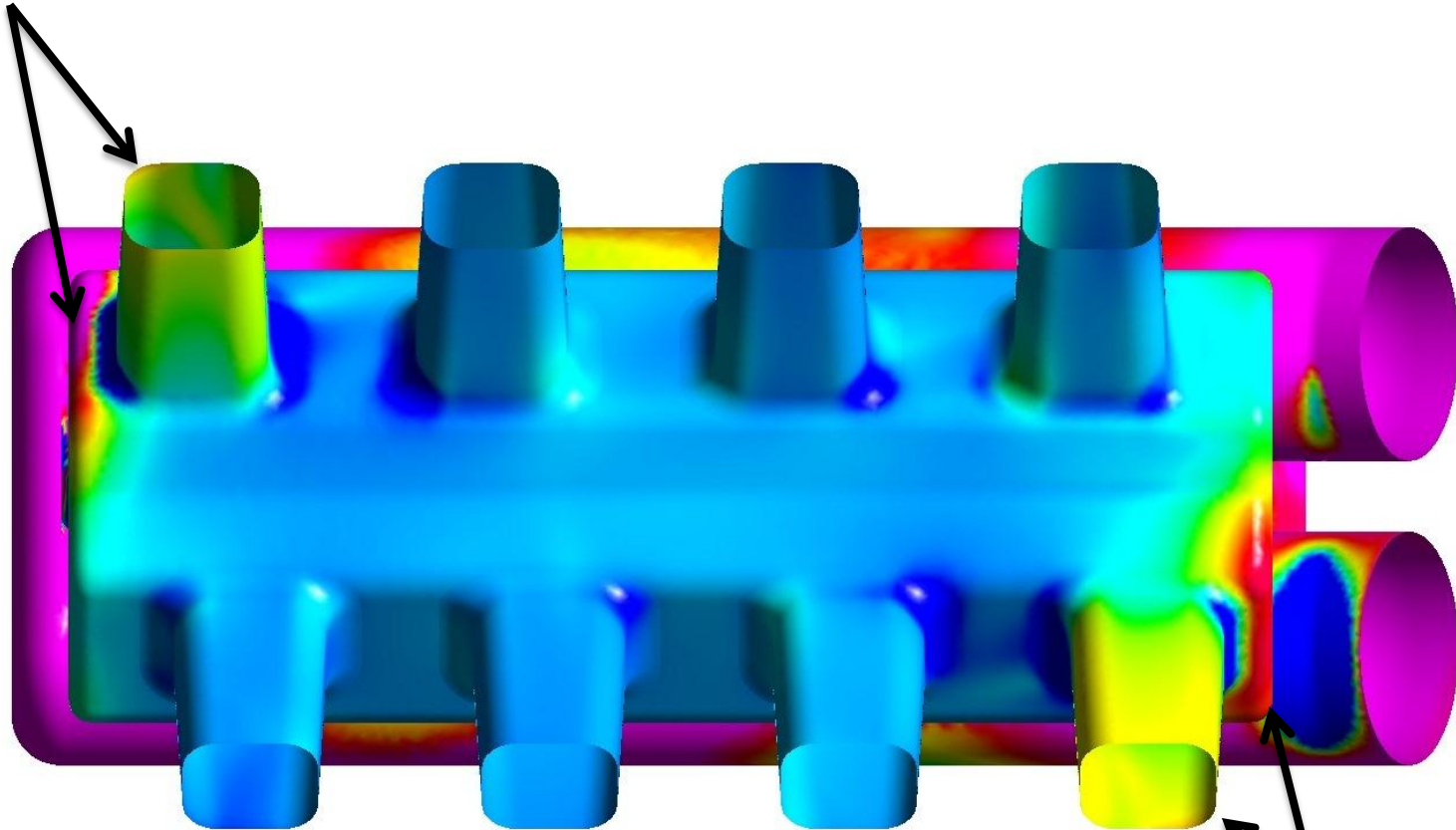
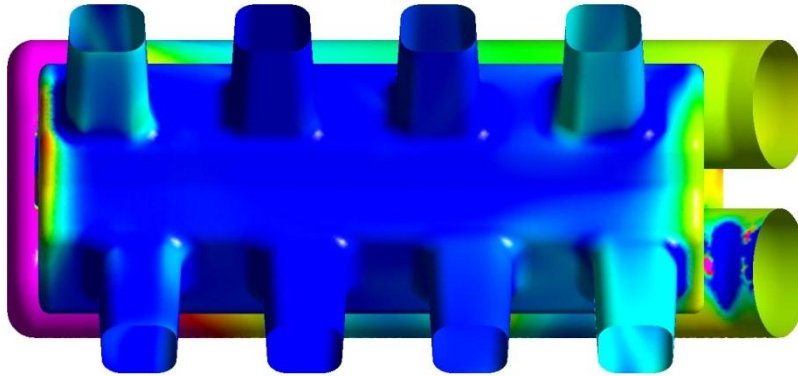
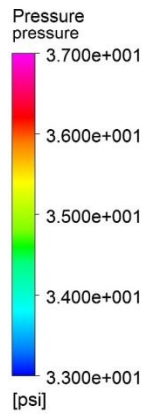


**+1 Higher PSI
near plenum
wall**

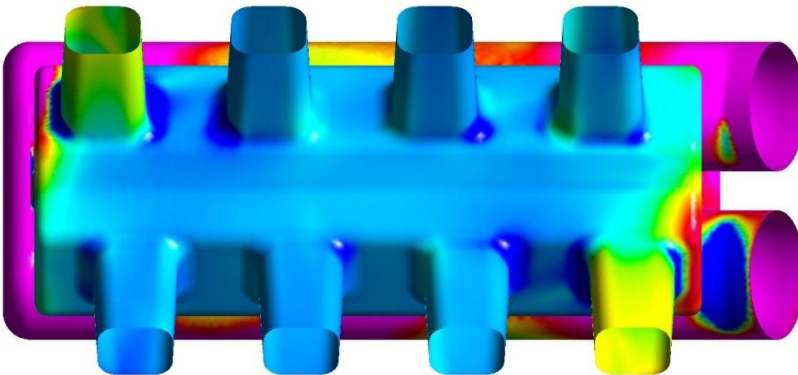
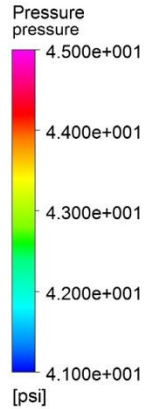


**+1 Higher PSI
near plenum
wall**

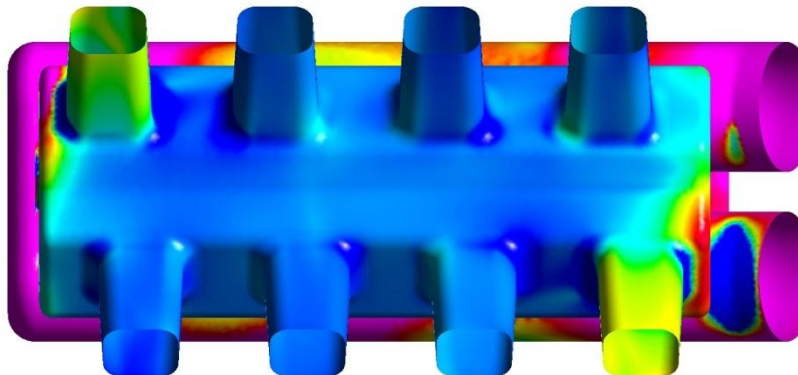
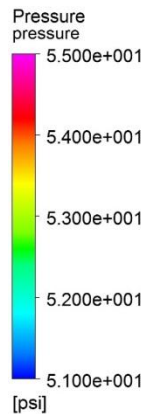
35 psi



45 psi

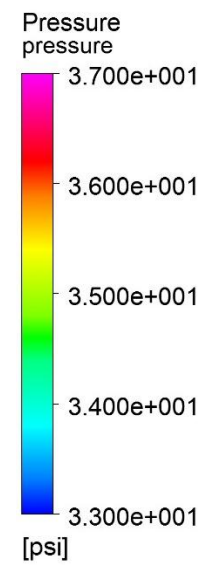


55 psi

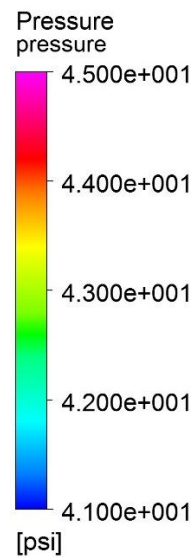
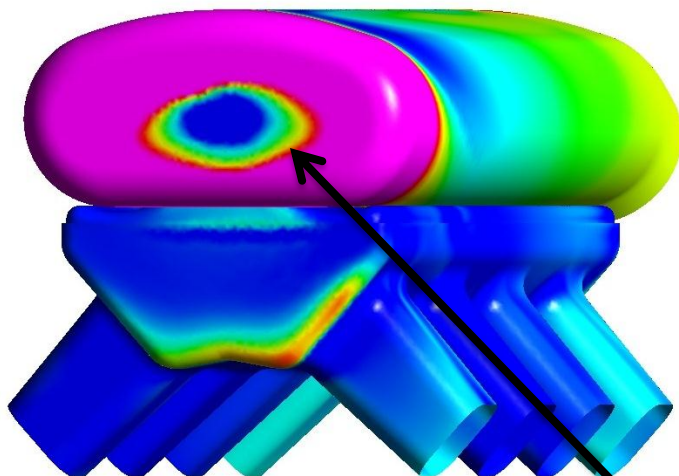


1) Same pattern of higher pressure at corners closest to the plenum walls shows up at all 3 pressures. Some relationship between pressure and the plenum wall?

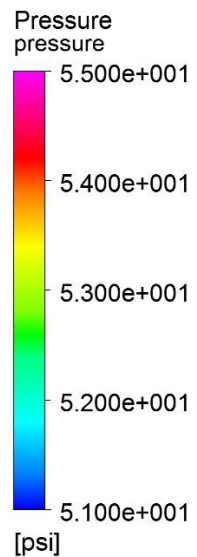
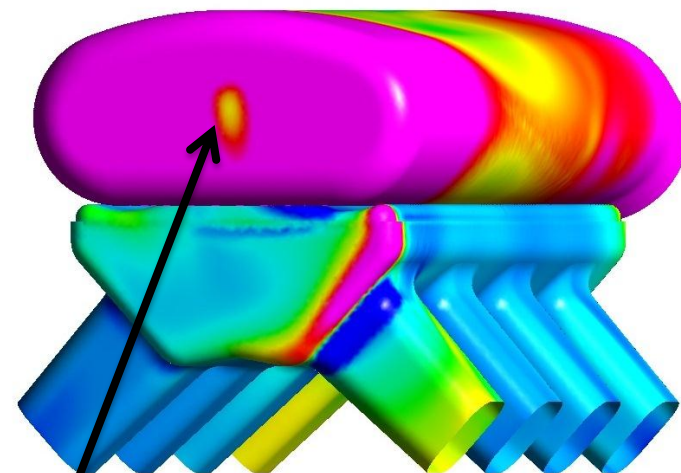
2) Lower plenum and runners consistently about 3 psi lower than the inlet pressure. Possibly indicating the passage from upper plenum to lower plenum is too narrow? Or maybe "roof" of plenum is too low?



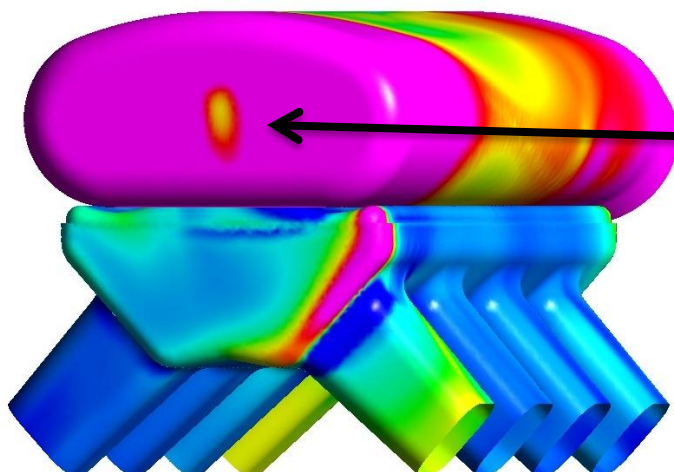
35 psi



45 psi



55 psi



Note low pressure "spot" on back wall of plenum indicating too close to "tube extension" in plenum